
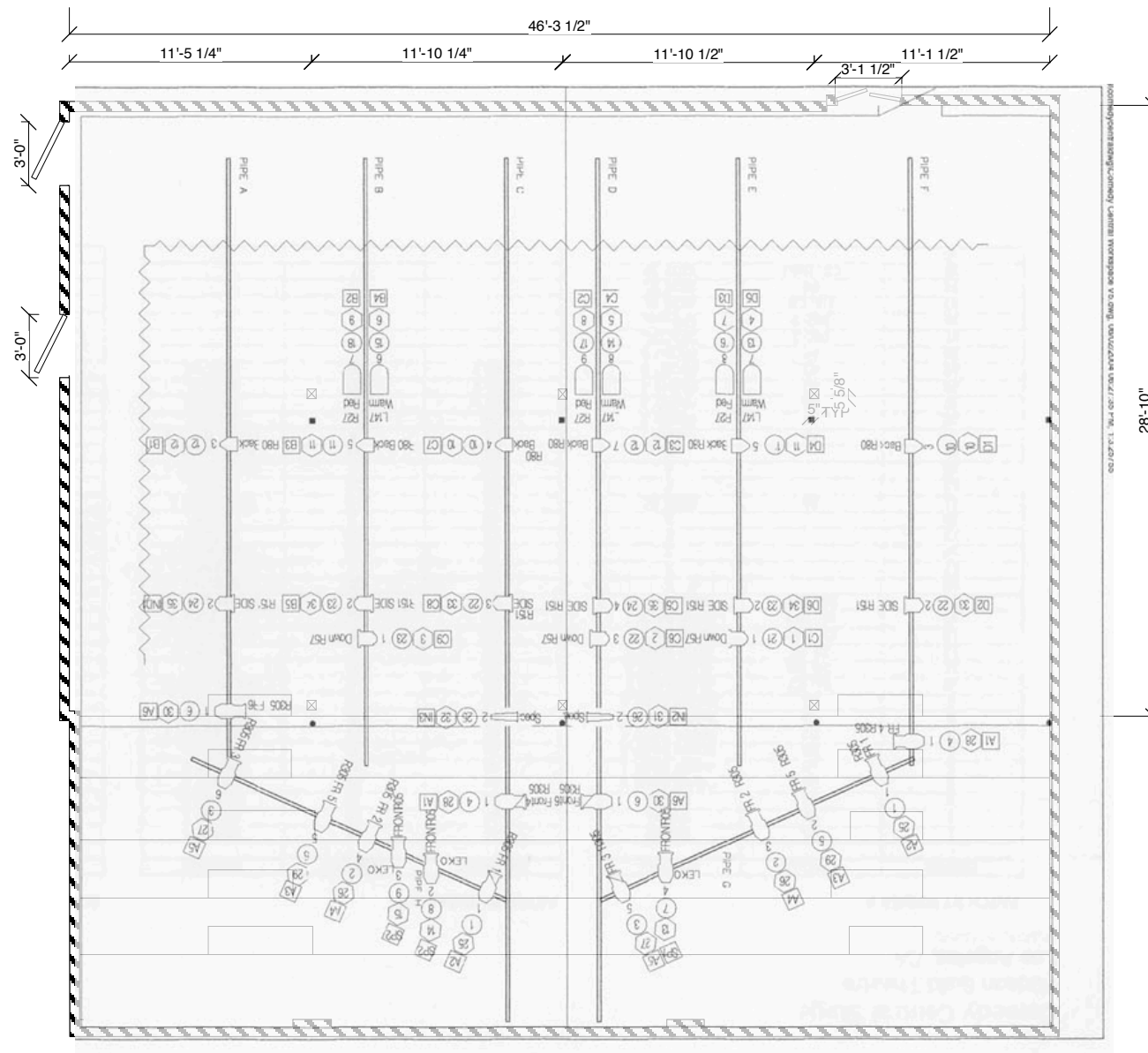



| NOTES | 99-SEAT HUDSON BACKSTAGE GROUNDPLAN | |
|--|---|---|
| 98- FIXED SEATS LIGHTING PLOT IS PERMANENT REP PLOT. NO CHANGES CAN BE MADE TO THE PLOT IN THE AIR. WHATSOEVER. | SCALE: 1/8" = 1'-0" |  |
| | DATE: OCT 1, 2010 | |
| MORE LIGHTING INSTRUMENTS AVAILABLE FOR EXPANSION. ETC EXPRESS 24/48 BOARD 36 2.4K DIMMERS | DRAWN BY: DAVID GOLDSTEIN <small>www.davidgoldsteindesigns.com davidgoldsteindesigns@gmail.com</small> | 6539 SANTA MONICA BLVD LOS ANGELES, CA 90038-1407 (323) 856-4249 www.hudsontheatre.com |



LX PLOT

| NOTES | 99-SEAT HUDSON BACKSTAGE LIGHTING PLOT AND GRID | |
|--|--|---|
| 98- FIXED SEATS LIGHTING PLOT IS PERMANENT REF PLOT. NO CHANGES CAN BE MADE TO THE PLOT IN THE AIR. WHATSOEVER. | SCALE: 1/8" = 1'-0" |  |
| MORE LIGHTING INSTRUMENTS AVAILABLE FOR EXPANSION. ETC EXPRESS 24/48 BOARD 36 2.4K DIMMERS | DATE: OCT 1, 2010 DRAWN BY: DAVID GOLDSTEIN <small>www.davidgoldsteindesigns.com davidgoldsteindesigns@gmail.com</small> | |