

**VERSION 4.1
AS OF 11.07.2022**

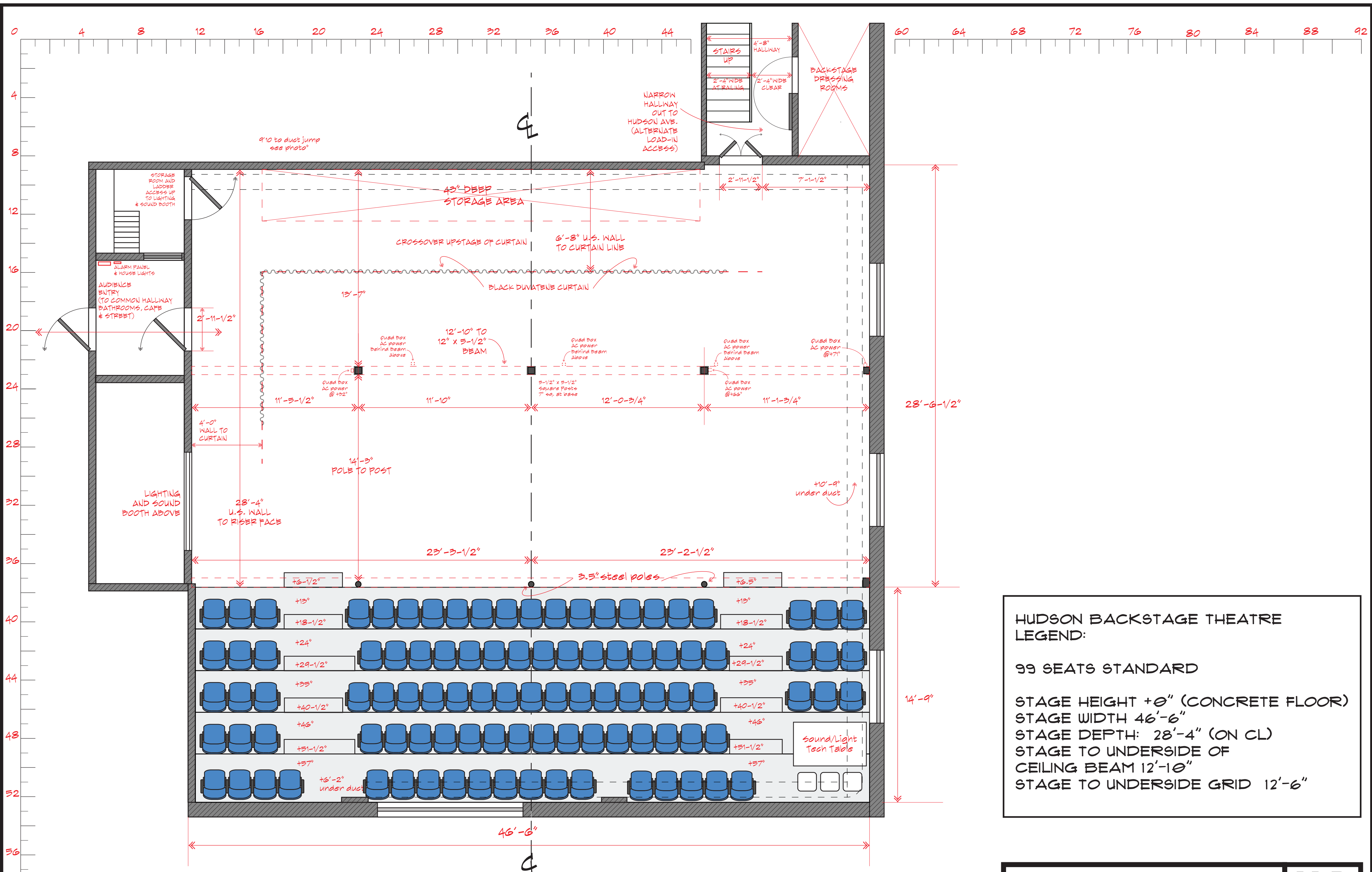
**HUDSON BACKSTAGE THEATRE
LEGEND:**

99 SEATS STANDARD

STAGE HEIGHT: +0" (CONCRETE FLOOR)
 STAGE WIDTH: 46'-6"
 STAGE DEPTH: 28'-4" (ON CL)
 STAGE TO UNDERSIDE OF
 CEILING BEAM: 12'-10"
 STAGE TO UNDERSIDE GRID: 12'-6"

HUDSON THEATRES 6539 SANTA MONICA BLVD. HOLLYWOOD, CA. 90038	H B DWG. # 1

HUDSON BACKSTAGE THEATRE . GROUND PLAN
 SCALE: 1/8" = 1'-0"



**HUDSON BACKSTAGE THEATRE
LEGEND:**

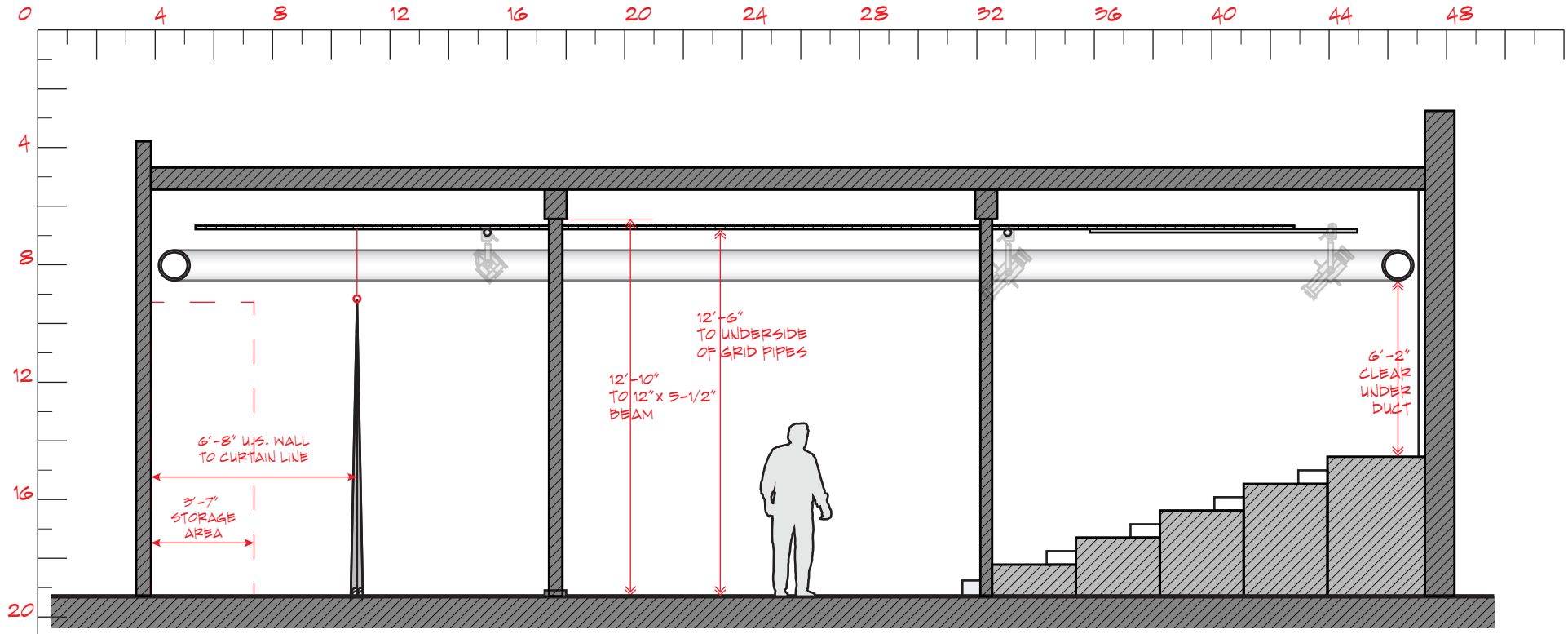
99 SEATS STANDARD

STAGE HEIGHT +0" (CONCRETE FLOOR)
 STAGE WIDTH 46'-6"
 STAGE DEPTH: 28'-4" (ON CL)
 STAGE TO UNDERSIDE OF
 CEILING BEAM 12'-10"
 STAGE TO UNDERSIDE GRID 12'-6"

HUDSON BACKSTAGE THEATRE • GROUND PLAN
 SCALE : 1/4" = 1' - 0"

VERSION 4.1 AS OF 11.07.2022

HUDSON THEATRES 6539 SANTA MONICA BLVD. HOLLYWOOD, CA. 90038	H B DWG. #
	1
HUDSON BACKSTAGE GROUND PLAN SCALE : 1/4" = 1' - 0"	
<small> DRAWN BY: JTB CHECKED BY: JTB DATE: 11.07.2022 </small>	

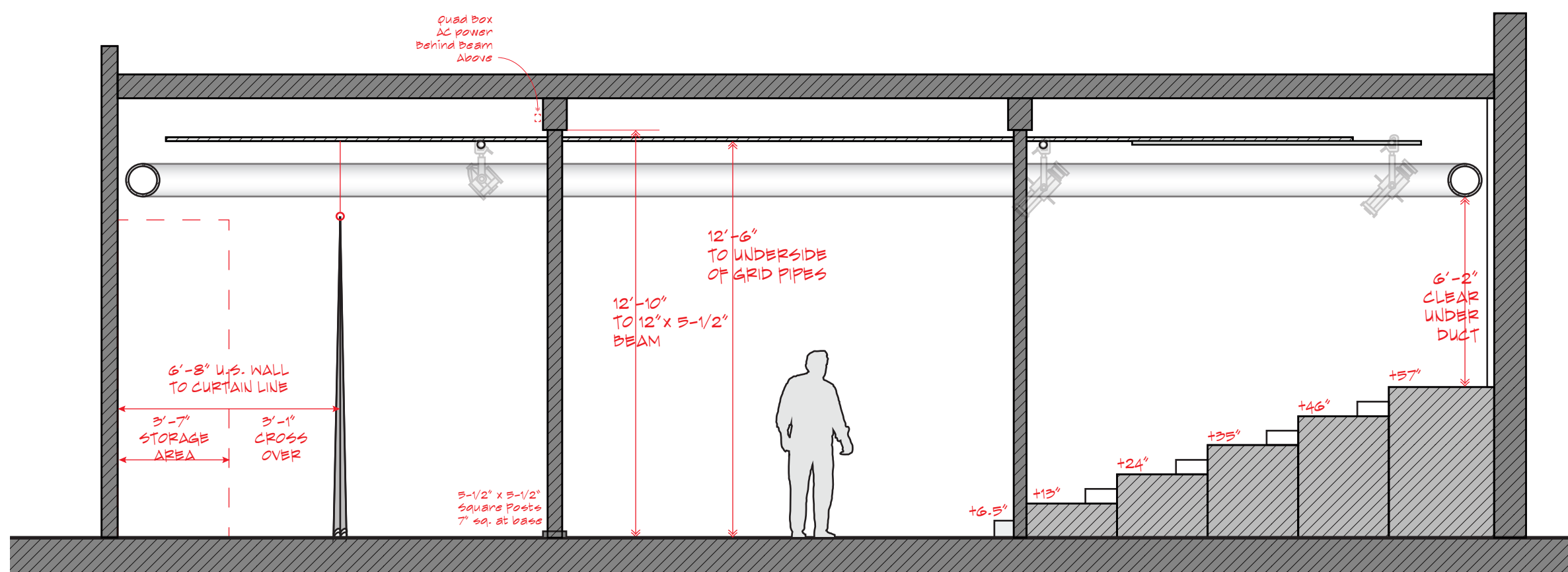


HUDSON BACKSTAGE THEATRE . SECTION THRU CL
 SCALE : 3/16" = 1' - 0"

HUDSON BACKSTAGE THEATRE
 LEGEND:
 99 SEATS STANDARD
 STAGE HEIGHT: +0" (CONCRETE FLOOR)
 STAGE WIDTH: 46'-6"
 STAGE DEPTH: 28'-4" (ON CL)
 STAGE TO UNDERSIDE OF
 CEILING BEAM: 12'-10"
 STAGE TO UNDERSIDE GRID: 12'-6"

HUDSON THEATRES 6539 SANTA MONICA BLVD. HOLLYWOOD, CA. 90038	H B DWG. #
	2
HUDSON BACKSTAGE SECTION THRU CL SCALE : 3/16" = 1' - 0"	

VERSION 4.1
 AS OF 11.07.2022



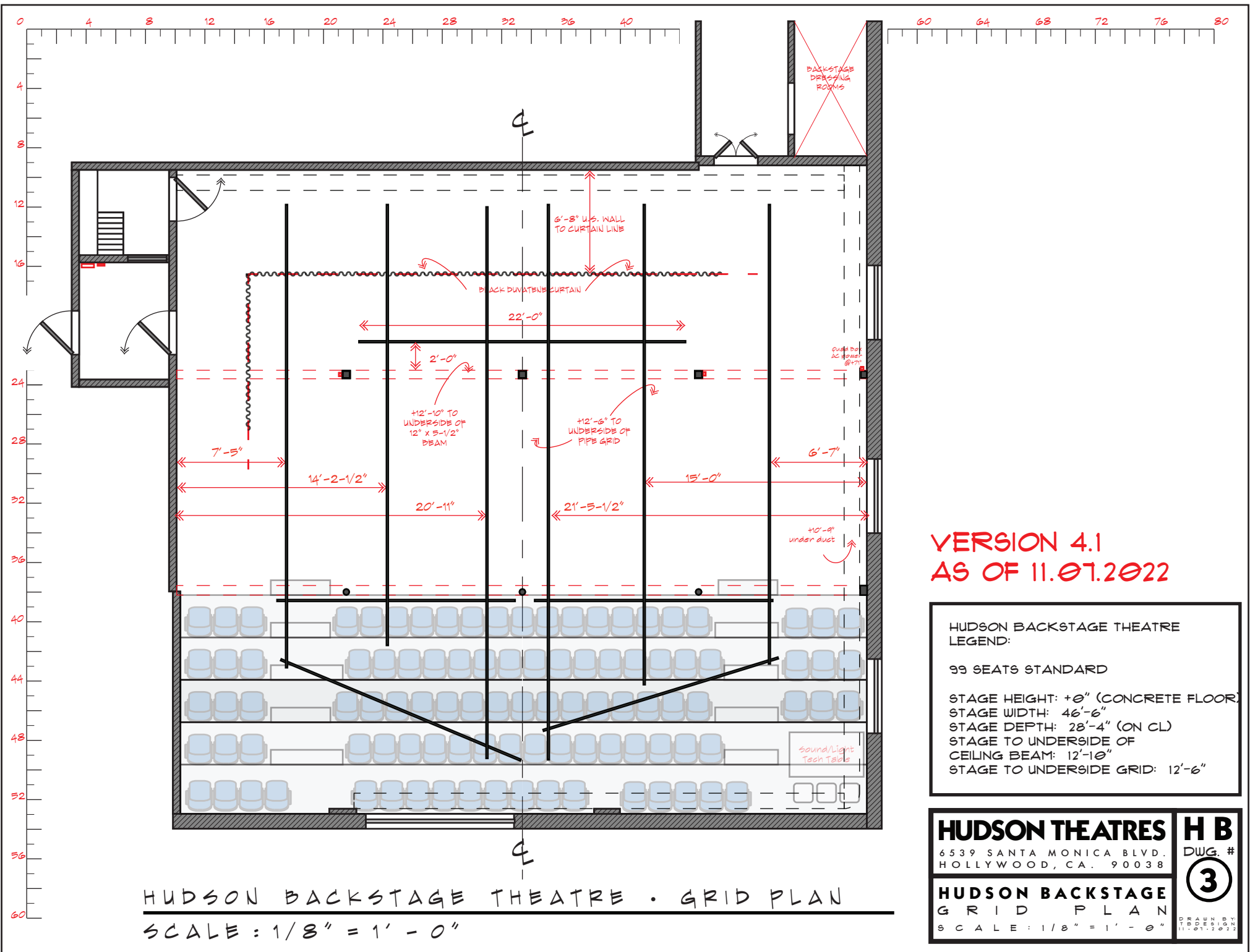
HUDSON BACKSTAGE THEATRE . SECTION THRU CL
 SCALE : 1/4" = 1' - 0"

HUDSON BACKSTAGE THEATRE
 LEGEND:
 99 SEATS STANDARD
 STAGE HEIGHT +0" (CONCRETE FLOOR)
 STAGE WIDTH 46'-6"
 STAGE DEPTH: 28'-4" (ON CL)
 STAGE TO UNDERSIDE OF
 CEILING BEAM 12'-10"
 STAGE TO UNDERSIDE GRID 12'-6"

HUDSON THEATRES 6539 SANTA MONICA BLVD. HOLLYWOOD, CA. 90038	H B DWG. # 2
	HUDSON BACKSTAGE SECTION THRU CL SCALE : 1/4" = 1' - 0"

DRAWN BY: T. B. B. 11.07.2022

VERSION 4.1 AS OF 11.07.2022



**VERSION 4.1
AS OF 11.07.2022**

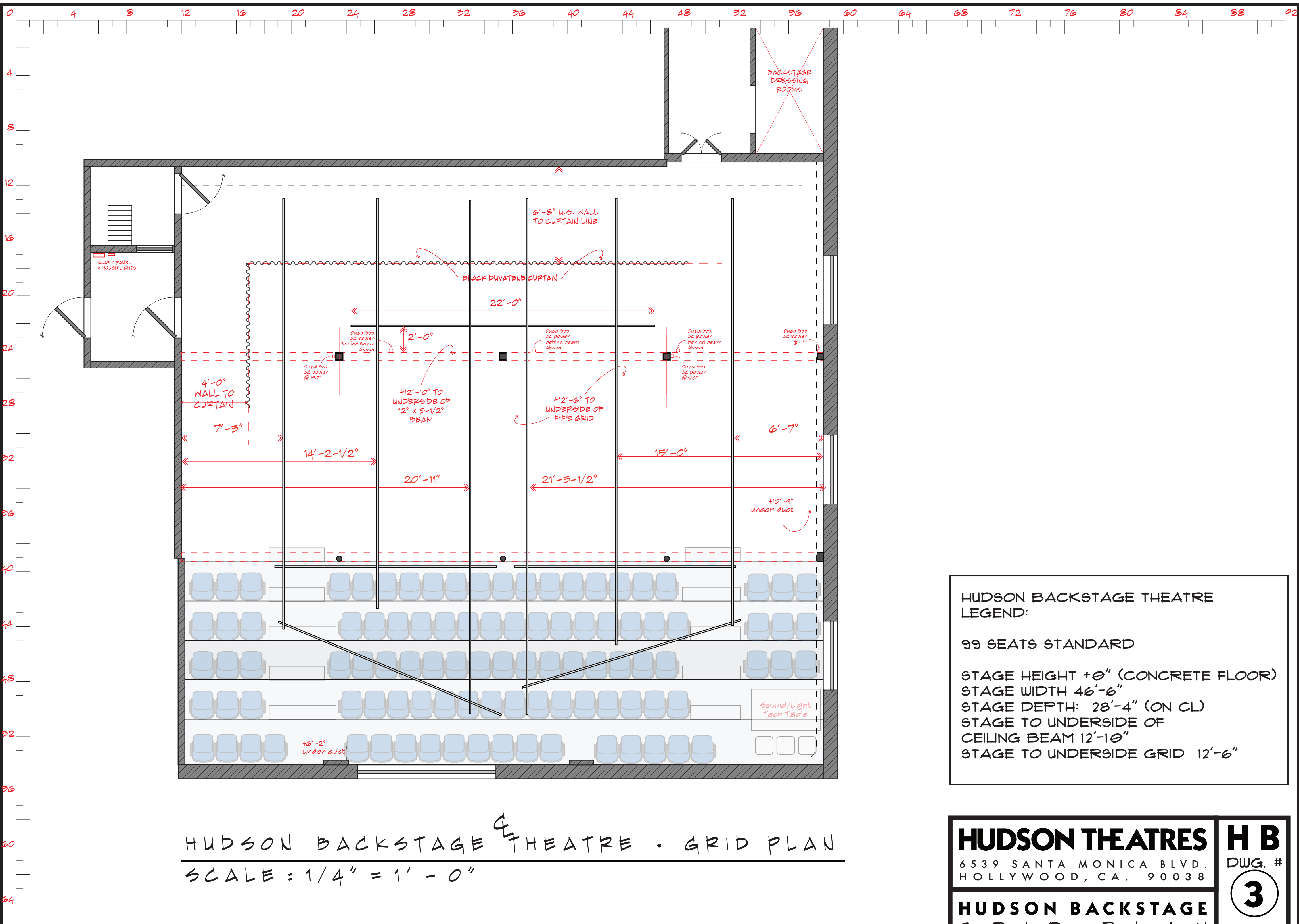
**HUDSON BACKSTAGE THEATRE
LEGEND:**

99 SEATS STANDARD

STAGE HEIGHT: +0" (CONCRETE FLOOR)
 STAGE WIDTH: 46'-6"
 STAGE DEPTH: 28'-4" (ON CL)
 STAGE TO UNDERSIDE OF
 CEILING BEAM: 12'-10"
 STAGE TO UNDERSIDE GRID: 12'-6"

HUDSON THEATRES 6539 SANTA MONICA BLVD. HOLLYWOOD, CA. 90038	H B DWG. #
	3
HUDSON BACKSTAGE GRID PLAN SCALE: 1/8" = 1'-0"	

HUDSON BACKSTAGE THEATRE . GRID PLAN
 SCALE: 1/8" = 1'-0"



HUDSON BACKSTAGE THEATRE • GRID PLAN
 SCALE : 1/4" = 1' - 0"

HUDSON BACKSTAGE THEATRE
 LEGEND:
 99 SEATS STANDARD
 STAGE HEIGHT +0" (CONCRETE FLOOR)
 STAGE WIDTH 46'-6"
 STAGE DEPTH: 28'-4" (ON CL)
 STAGE TO UNDERSIDE OF
 CEILING BEAM 12'-10"
 STAGE TO UNDERSIDE GRID 12'-6"

HUDSON THEATRES 6539 SANTA MONICA BLVD. HOLLYWOOD, CA. 90038	H B DWG. #
	<div style="border: 1px solid black; border-radius: 50%; width: 40px; height: 40px; display: flex; align-items: center; justify-content: center; margin: 0 auto;"> 3 </div>
HUDSON BACKSTAGE GRID PLAN SCALE : 1/4" = 1' - 0"	

VERSION 4.1 AS OF 11.07.2022

11.07.2022