

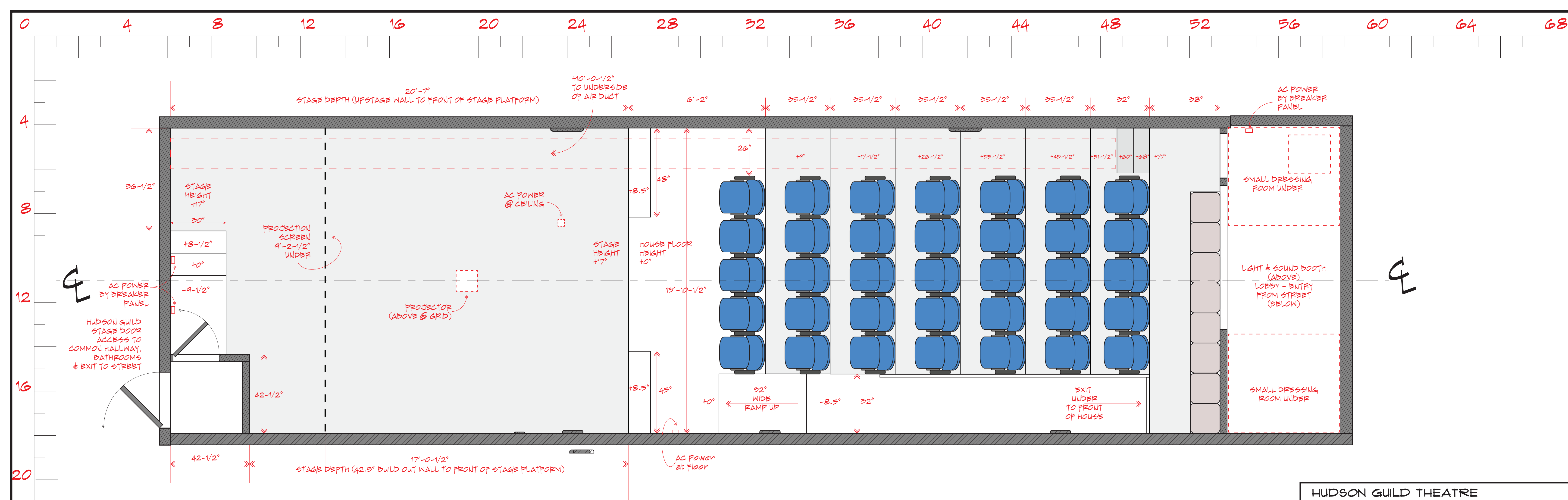
HUDSON GUILD THEATRE • GROUND PLAN

SCALE : 3/16" = 1' - 0"

HUDSON GUILD THEATRE  
 LEGEND:  
 43 SEATS: (35 STANDARD / 8 BENCH)  
 STAGE HEIGHT +17"  
 STAGE WIDTH 13'-10-1/2"  
 STAGE DEPTH: (STAGE LEFT) 20'-1"  
 (STAGE RIGHT) 17'-0-1/2"  
 HOUSE FLOOR TO CEILING 13'-2"  
 STAGE TO CEILING 11'-3"  
 STAGE TO UNDERSIDE GRID 11'-4"

<b>HUDSON THEATRES</b> 6539 SANTA MONICA BLVD. HOLLYWOOD, CA. 90038	<b>H G</b> DWG. #
	<b>1</b>
<b>HUDSON GUILD</b> <b>GROUND PLAN</b> SCALE : 3/16" = 1' - 0"	

VERSION 4.1  
 AS OF 11.07.2022



HUDSON GUILD THEATRE • GROUND PLAN  
 SCALE: 1/2" = 1' - 0"

HUDSON GUILD THEATRE  
 LEGEND:

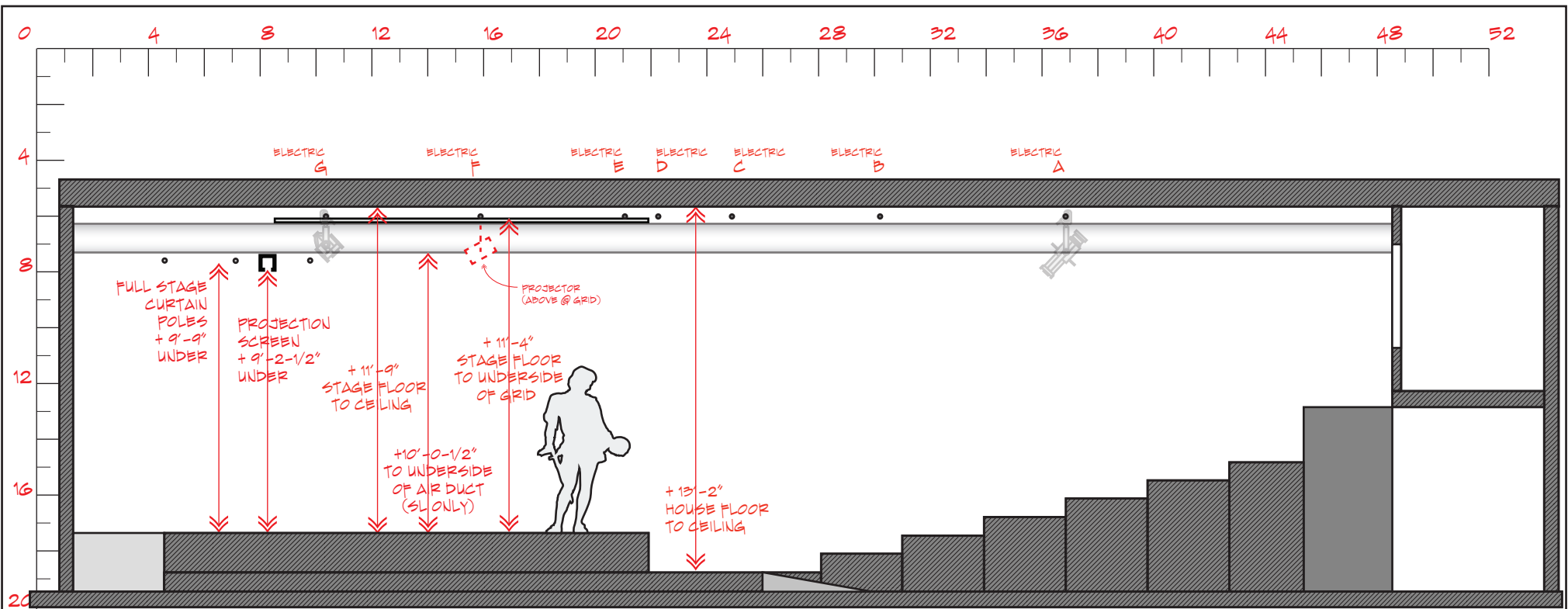
43 SEATS: (35 STANDARD / 8 BENCH)

STAGE HEIGHT +11"  
 STAGE WIDTH 13'-10-1/2"  
 STAGE DEPTH: (STAGE LEFT) 20'-1"  
 (STAGE RIGHT) 11'-0-1/2"  
 HOUSE FLOOR TO CEILING 13'-2"  
 STAGE TO CEILING 11'-9"  
 STAGE TO UNDERSIDE GRID 11'-4"

VERSION 4.1 AS OF 11.07.2022

<b>HUDSON THEATRES</b> 6539 SANTA MONICA BLVD. HOLLYWOOD, CA. 90038	<b>H G</b> DWG. #
	<b>1</b>
<b>HUDSON GUILD</b> GROUND PLAN SCALE: 1/2" = 1' - 0"	

DRAWN BY  
11.01.2022



HUDSON GUILD THEATRE • SECTION THRU CL

SCALE : 3/16" = 1' - 0"

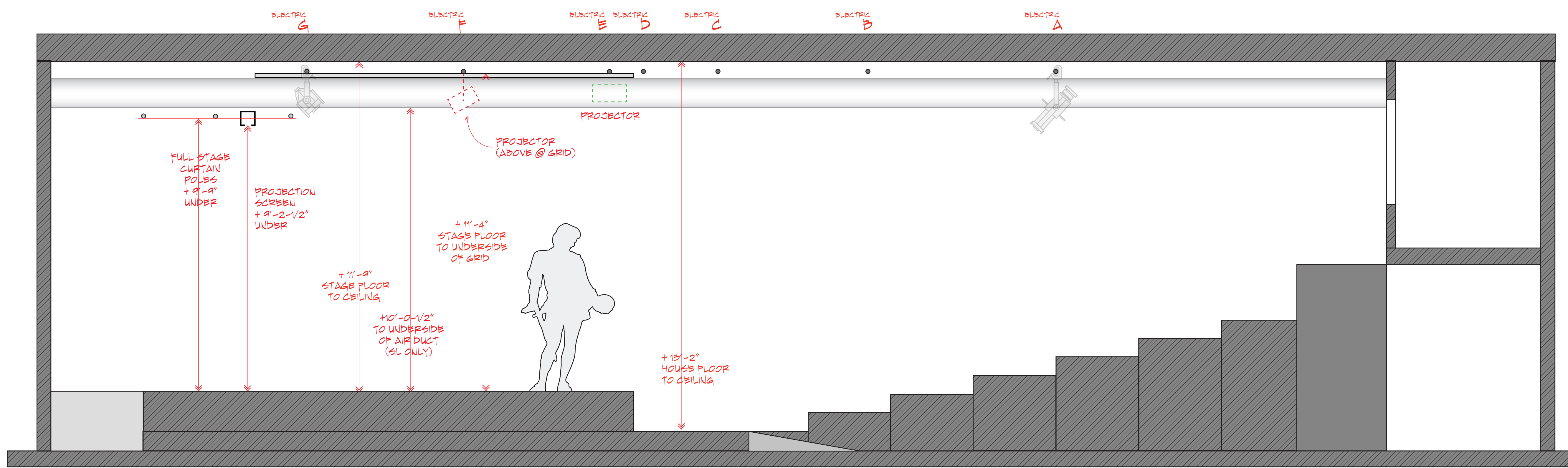
HUDSON GUILD THEATRE  
 LEGEND:  
 43 SEATS: (35 STANDARD / 8 BENCH)  
 STAGE HEIGHT +11"  
 STAGE WIDTH 13'-10-1/2"  
 STAGE DEPTH: (STAGE LEFT) 20'-1"  
 (STAGE RIGHT) 17'-0-1/2"  
 HOUSE FLOOR TO CEILING 13'-2"  
 STAGE TO CEILING 11'-9"  
 STAGE TO UNDERSIDE GRID 11'-4"

<b>HUDSON THEATRES</b> 6539 SANTA MONICA BLVD. HOLLYWOOD, CA. 90038	<b>H G</b> DWG. #
	<b>2</b>
<b>HUDSON GUILD</b> SECTION THRU CL SCALE : 3/16" = 1' - 0"	

VERSION 4.1  
 AS OF 11.07.2022

0 4 8 12 16 20 24 28 32 36 40 44 48 52 56 60 64 68

4  
8  
12  
16  
20  
24  
28  
32

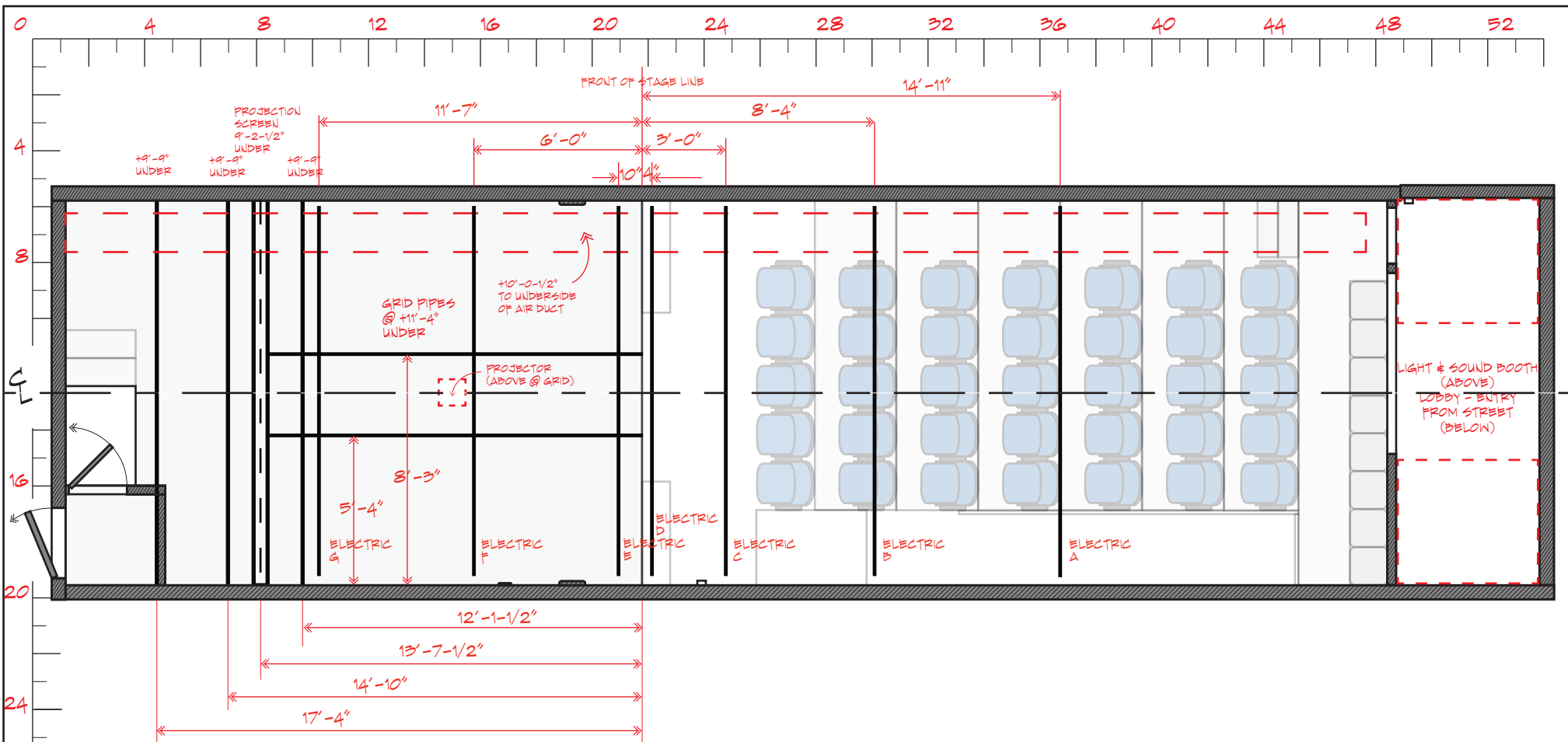


HUDSON GUILD THEATRE • SECTION THRU CL  
 SCALE : 1/2" = 1' - 0"

HUDSON GUILD THEATRE  
 LEGEND:  
 43 SEATS: (35 STANDARD / 8 BENCH)  
 STAGE HEIGHT +11"  
 STAGE WIDTH 13'-10-1/2"  
 STAGE DEPTH: (STAGE LEFT) 20'-1"  
 (STAGE RIGHT) 17'-0-1/2"  
 HOUSE FLOOR TO CEILING 13'-2"  
 STAGE TO CEILING 11'-9"  
 STAGE TO UNDERSIDE GRID 11'-4"

<b>HUDSON THEATRES</b> 6539 SANTA MONICA BLVD. HOLLYWOOD, CA. 90038	<b>H G</b> DWG. #
	<b>2</b>
<b>HUDSON GUILD</b> <b>GRID PLAN</b> SCALE : 1/2" = 1' - 0"	
<small>DRAWN BY: T.B.A. 11-01-2022</small>	

VERSION 4.1 AS OF 11.07.2022



# HUDSON GUILD THEATRE • GRID PLAN

SCALE : 3/16" = 1' - 0"

HUDSON GUILD THEATRE  
LEGEND:

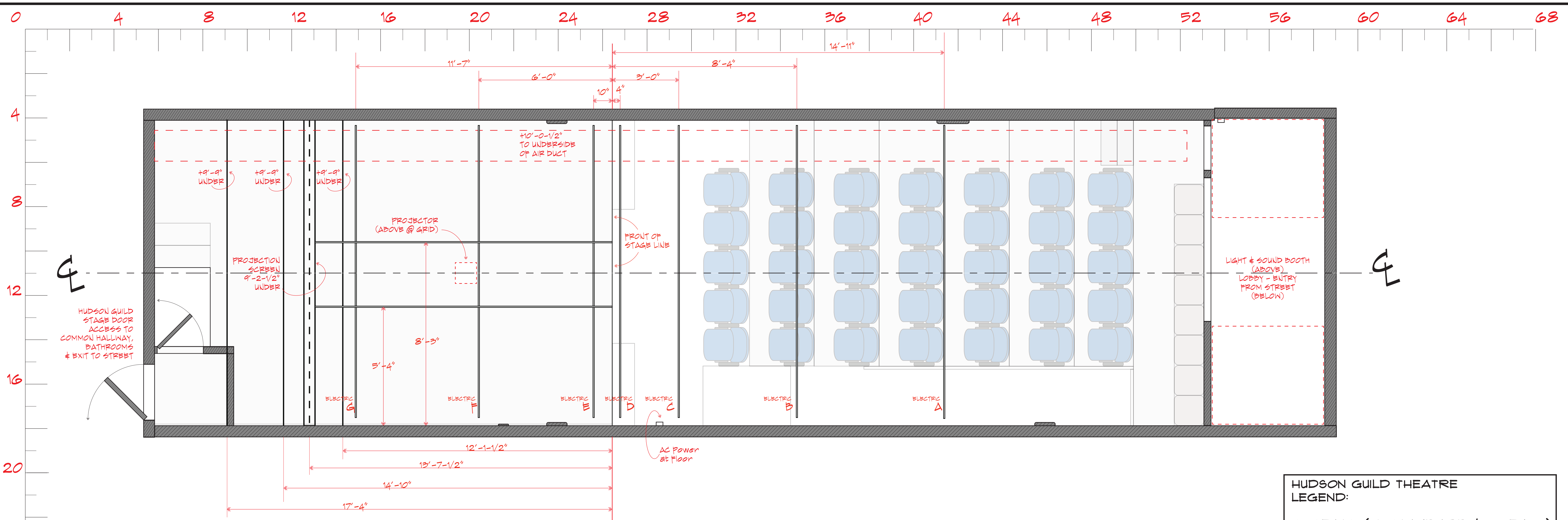
43 SEATS: (35 STANDARD / 8 BENCH)

STAGE HEIGHT +17"  
STAGE WIDTH 13'-10-1/2"  
STAGE DEPTH: (STAGE LEFT) 20'-1"  
(STAGE RIGHT) 17'-0-1/2"  
HOUSE FLOOR TO CEILING 13'-2"  
STAGE TO CEILING 11'-3"  
STAGE TO UNDERSIDE GRID 11'-4"

<b>HUDSON THEATRES</b> 6539 SANTA MONICA BLVD. HOLLYWOOD, CA. 90038	<b>H G</b> DWG. #
	<b>3</b>
<b>HUDSON GUILD</b> <b>GRID PLAN</b> SCALE : 3/16" = 1' - 0"	

VERSION 4.1  
AS OF 11.07.2022





HUDSON GUILD THEATRE  
LEGEND:  
43 SEATS: (35 STANDARD / 8 BENCH)  
STAGE HEIGHT +11"  
STAGE WIDTH 13'-10-1/2"  
STAGE DEPTH: (STAGE LEFT) 20'-1"  
(STAGE RIGHT) 17'-0-1/2"  
HOUSE FLOOR TO CEILING 13'-2"  
STAGE TO CEILING 11'-9"  
STAGE TO UNDERSIDE GRID 11'-4"

<b>HUDSON THEATRES</b> 6539 SANTA MONICA BLVD. HOLLYWOOD, CA. 90038	<b>H G</b> DWG. #
	<b>3</b>
<b>HUDSON GUILD</b> <b>GRID PLAN</b> SCALE : 1/2" = 1' - 0"	
<small>DRAWN BY 11.07.2022</small>	